

# ADDENDUM NO. 1

## Page 1

DATE: 3/27/2009

PROJECT: Locker Room Remodel @ North Tahoe Middle School &  
North Tahoe High School  
2945 Polaris Road  
Tahoe City, CA 96145

Job No. 01-087.1  
DSA File Number No. 31-H4  
DSA Application No. 02-110279

FROM: Placerville  
ANOVA Architects, Inc.  
778 Pacific St.  
Placerville, CA 95667

This Addendum forms a part of the Contract Documents and modifies the original Bidding Documents and previous Addenda as noted below. Acknowledge receipt of this Addendum in the space provided in the Bid Form. Failure to do so may subject Bidder to disqualification.

This Addendum consists of 3 pages and all attachments noted herein.

### **MODIFICATIONS TO PREVIOUS ADDENDA:**

0.1 None.

### **MODIFICATIONS TO PROJECT MANUAL:**

1. DELETE **Section 10170 – Solid Plastic Toilet Compartments** and ADD attached **Section AD1-10170 Composite Toilet Partitions** (3 pages) in its place.
2. Reference **Section 01110 – Summary of Work**
  - a. **Article 1.3:** ADD the following paragraph:  
“G. The last day of the school session is June 16, 2009”
  - b. **Article 1.3:** ADD the following paragraph:  
“H Graduation is scheduled for June 9, 2009 no construction activity or presence will be allowed after 12:00 p.m. on this day.

### **MODIFICATIONS TO DRAWINGS:**

#### **ARCHITECTURAL DRAWINGS:**

- A1. DELETE **Sheet A2.1.1, First Floor Enlarged Demolition Plans** and ADD 30x42 sheet **AD1-A2.1.1, First Floor Enlarged Demolition Plans**, bound separately, in its place.
- A2. DELETE **Sheet A2.2.1, Second Floor Enlarged Demolition Plans** and ADD 30x42 sheet **AD1-A2.2.1, Second Floor Enlarged Demolition Plans**, bound separately, in its place.

# ADDENDUM NO. 1

## Page 2

- A3. DELETE Sheet A5.1.0, First Floor Enlarged Demolition Ceiling Plans and ADD 30x42 sheet AD1-A5.1.0, First Floor Enlarged Demolition Ceiling Plans, bound separately, in its place.
- A4. DELETE Sheet A5.1.1, First Floor Enlarged Ceiling Plans and ADD 30x42 sheet AD1-A5.1.1, First Floor Enlarged Ceiling Plans, bound separately, in its place.
- A5. DELETE Sheet A5.2.0, Second Floor Enlarged Demolition Ceiling Plans and ADD 30x42 sheet AD1-A5.2.0, Second Floor Enlarged Demolition Ceiling Plans, bound separately, in its place.
- A6. DELETE Sheet A5.2.1, Second Floor Enlarged Ceiling Plans and ADD 30x42 sheet AD1-A5.2.1, Second Floor Enlarged Ceiling Plans, bound separately, in its place.
- A7. Reference Sheet A18.1 – Interior Details
  - a. ADD detail 7/A18.2, Suspended GWB Ceiling, per drawing AD1-A7a, attached.

### HVAC DRAWINGS:

- M1. Reference Sheet M0.1, Mechanical Legend and Notes:
  - a. Sheet Note #1, CHANGE “80x38R” Return Air Register to “38x80RHS”.
- M2. Reference Sheet M2.1.1, HVAC Enlarged Partial First Floor Demolition Plans:
  - a. “Diffuser, Register, & Grill Schedule ADD the following symbol: RHS, “Titus” Model 30RS, Heavy Duty Gym Grill, 0 Deflection.

### PLUMBING DRAWINGS:

- P1. Reference sheet P0.2, Plumbing Schedules, Booster Circulating Pump Schedule:
  - a. CHANGE detail reference FROM 2/P0.2 TO 2/P0.1.

### ELECTRICAL DRAWINGS:

- E1. Reference Sheet E3.2 Enlarged Demolition second Floor Plan Electrical:
  - a. Numbered Notes #5 DELETE “Hand Dryers are to be re-installed” ADD “Extend wires to new location of New Hand Dryers”.
- E2. Reference Sheet E4.1 Enlarged First Floor Plan North Tahoe Middle/ High School Electrical, Numbered Notes:
  - a. ADD “16. Verify exact location of existing box in ceiling. Locate fixture over top of junction box and connect as required”.
- E3. Reference Sheet E4.1 Enlarged First Floor Plan North Tahoe Middle/ High School Electrical
  - a. ADD “3 #12 and 1 #12 “G”” conductors between light fixtures located in Coaches 2052.
  - b. ADD Numbered Note “7” tag for junction box located in H.S. Boy’s Locker 1075 near Hallway leading to Vest 1079.
- E4. Reference Sheet E4.2 Enlarged Second Floor Plan North Tahoe Middle/ High School Electrical:
  - a. CHANGE numbered note tag located in Coaches 2062 FROM 19 TO 9.
  - b. DELETE Fixture Tag “A” for light fixture located in M.S. Girl’s Lockers 2056 near Coaches 2052.
  - c. CHANGE Numbered Note Tag for light fixture located in M.S. Girl’s Lockers 2056 near Coaches 2052 FROM 15 TO 8.
  - d. ADD branch circuit designation “12” for receptacles located in Coaches 2052, Two (2) locations.

- e. CHANGE conductors serving the light fixtures in Coaches 2052 FROM **shown TO 3 #12 and 1 #12 "G" conductors.**
- f. DELETE Fixture Tag "**A**" for light fixture located in M.S. Girl's Lockers 2059 near student sinks.
- g. ADD **two (2) #12 conductors** in conduit between the exit sign and light fixture located in M.S. Girl's Lockers 2059 leading to Vest 2060.

**LOW VOLTAGE DRAWINGS:**

**T1. No Changes**

- a.

\* End Addendum No. 1 \*

# **COMPOSITE TOILET PARTITIONS**

## **SECTION AD1-10170**

Page 1

### **PART 1 - GENERAL**

#### **RELATED DOCUMENTS**

- A. Drawings and general provisions of the Contract, including General Conditions and Division 1 Specification Sections, apply to this Section.

#### **SUMMARY**

- B. This Section includes solid color reinforced composite toilet partitions and related work as shown and specified.

#### **SUBMITTALS**

- C. Product Data: For each type of product indicated. Include construction details, material descriptions, dimensions of individual components and profiles, and finishes.
- D. Shop Drawings: Include plans, elevations, sections, details, and attachments to other work.
- E. Samples: Submit 2 minimum 4 x 4-inch samples for each color specified.
- F. Closeout Submittals
  - 1. O & M Manuals: Maintenance and cleaning instructions
  - 2. Guarantee: Provide completed form per Article 1.5

#### **PROJECT CONDITIONS**

- G. Field Measurements: Verify actual locations of walls, columns, ceilings, and other construction contiguous with toilet partitions by field measurements before fabrication and indicate measurements on Shop Drawings. Verify that solid backing has been provided for attachment.

#### **WARRANTY**

- H. Provide in manufacturer's form in against corrosion, warpage, breakage and delamination for period of 10 years beginning at date of acceptance by Owner.

### **PART 2 - PRODUCTS**

#### **SOLID COLOR REINFORCED COMPOSITE TOILET PARTITIONS**

- A. Basis of Design: 1092.67 Sierra Series manufactured by Bobrick
- B. Alternative Manufacturers: No known equal. Proposed equals are subject to substitution process per Section 01331 - PRODUCT SUBMITTALS AND SUBSTITUTIONS.
- C. ASTM E 84 Surface Burning Characteristics:

1. Smoke developed index: Not to exceed 450
  2. Flame spread index: Not exceed 75
- D. Style: Floor mounted, overhead braced.
- E. Doors and Stiles:  $\frac{3}{4}$  inch thick solid color composite seamless, with eased edges.
- F. Panels:  $\frac{1}{2}$  inch thick solid color composite seamless, with eased edges.
- G. Pilaster Shoes and Sleeves: Manufacturer's standard stainless steel.
- H. Brackets: Full-height (continuous) type; manufacturer's standard design; stainless steel at wall-hung urinals; polymer elsewhere.
- I. Overhead Bracing: Manufacturer's standard extruded-aluminum head rail with anti-grip profile.
- J. Color:
1. Color A: SC04 Forest Green, as manufactured by Bobrick. Verify color with Architect.
  2. Color B: SC03 Terra Cotta, as manufactured by Bobrick. Verify color with Architect.

#### ACCESSORIES

- K. Hinges: Continuous stainless steel.
- L. Hardware and Accessories: Manufacturer's institutional stainless steel hardware and accessories.
- M. Anchors and Fasteners: Chrome-plated steel or brass, finished to match hardware, with tamper resistant type heads. Provide sex-type bolts for through-bolt applications.

#### FABRICATION

- N. General: Provide manufacturer's standard corrosion-resistant supports, leveling mechanisms, fasteners, and anchors at pilasters to suit support conditions. Provide shoes and sleeves at pilasters to conceal supports and leveling mechanism.
- O. Doors: Unless otherwise indicated, provide 24-inch wide in-swinging doors for standard toilet partitions and 36-inch wide out-swinging doors for side opening accessible partitions; 2'-10" for front opening accessible partitions.
1. Latch and Keeper: Manufacturer's standard surface-mounted sliding latch unit designed for emergency access. Provide units that comply with accessibility requirements of authorities having jurisdiction at accessible partitions.
  2. Coat Hook: Manufacturer's standard combination hook and rubber-tipped bumper, sized to prevent door from hitting partition-mounted accessories. Mount at +48 inches in accessible stall.
  3. Door Pull: Manufacturer's standard unit at out-swinging doors that complies with accessibility requirements of authorities having jurisdiction. Provide units on both sides of doors at accessible partitions. Locate pull below latch.

#### PART 3 - EXECUTION

**PREPARATION**

- A. Coordination: Coordinate with other trades to insure proper placement of backing for attachment of the work of this section.
- B. Measurements: Field verify minimum clear dimensions shown from partitions to plumbing fixtures on drawings. Report discrepancies. Do not install affected partitions until dimensional issues are resolved.

**INSTALLATION**

- C. General
  - 1. Comply with manufacturer's written installation instructions.
  - 2. Install units rigid, straight, level, and plumb.
  - 3. Securely attach units to supporting construction with manufacturer's recommended anchoring devices.
- D. Overhead-Braced Units: Secure continuous head rail to each pilaster with not less than two fasteners. Hang doors to align tops of doors with tops of panels.
- E. Maximum Clearances:
  - 1. Pilasters and Panels: 1/2 inch.
  - 2. Panels and Walls: 1 inch.
  - 3. Doors and Pilasters: 3/16", uniform from top to bottom.

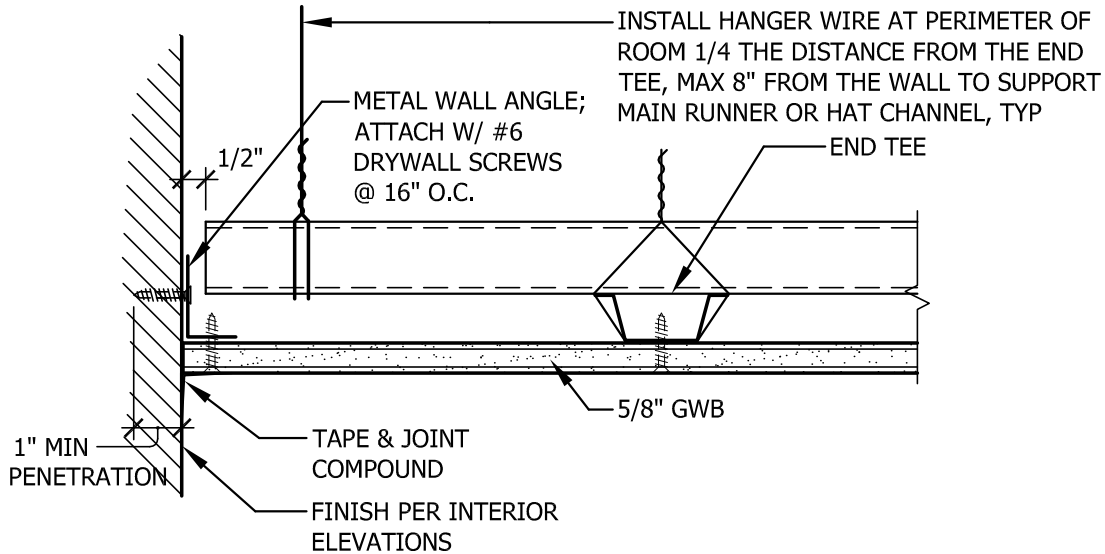
**ADJUSTMENT**

- F. General: Prior to acceptance adjust and lubricate hardware to assure smooth operation.

**CLEANING**

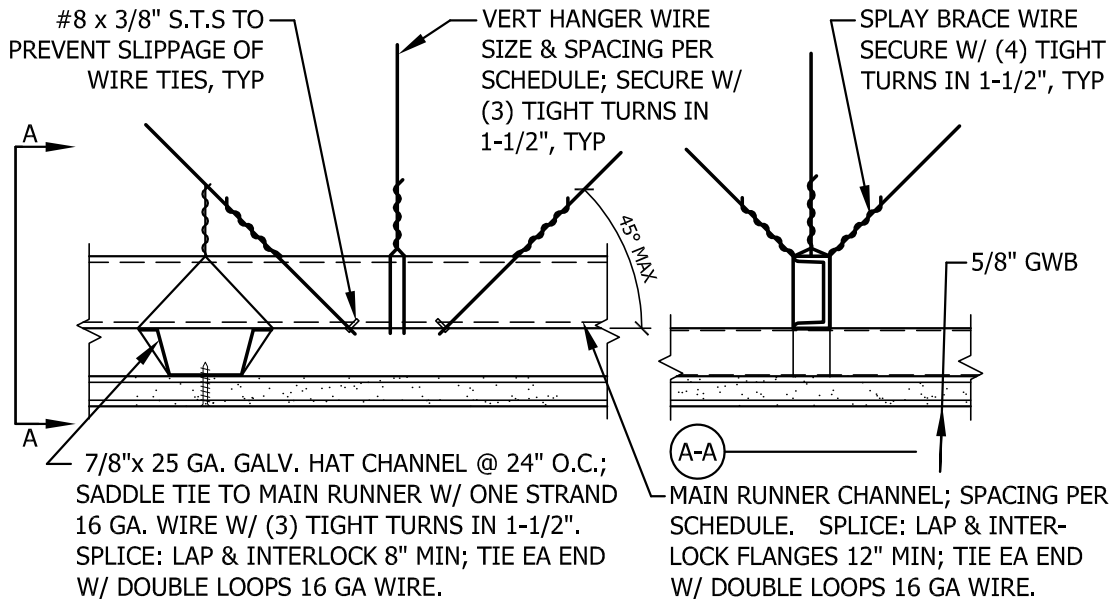
- G. At completion clean exposed surfaces in a manner that will not damage finish.
- H. Keep premises free from accumulation of waste and debris. At completion of installation remove surplus materials and debris.

END SECTION 10170



### CEILING AT WALL

OPTION	SCHEDULE				
	MAIN RUNNER CHANNEL			VERTICAL HANGER WIRE	
	MATERIAL	WT. / FT	SPACING	SIZE	SPACING
1	1-1/2" COLD ROLLED CHANNEL	0.475 LBS	4'-0" O.C.	#9 GA. GALV	3'-0" O.C.
2	1-1/2" COLD ROLLED CHANNEL	0.475 LBS	3'-6" O.C.	#9 GA. GALV	3'-6" O.C.
3	1-1/2" COLD ROLLED CHANNEL	0.475 LBS	3'-0" O.C.	#9 GA. GALV	4'-0" O.C.
4	1-1/2" HOT ROLLED CHANNEL	1.12 LBS	4'-0" O.C.	#8 GA. GALV	4'-0" O.C.



## 7 SUSPENDED GWB CEILING

A18.2 SCALE: 3"=1'-0"

L:\PROJECT\2001\01087.1\ARCH\_WORKING\_DWGS\Details\01087A1840.dwg - cdedrick - 03.24.2009 4:55:40 PM

L:\PROJECT\2001\01087.1\ARCH\_WORKING\_DWGS\01087A521

Last Save: CDEDRICK, 03.25.2009 3:46 PM

**ANOVA**  
ARCHITECTS  
MURRAY DOWNS OSHIMA YEE  
3025 SACRAMENTO STREET  
PLACERVILLE, CA 95867  
TEL 530 626 1810 FAX 530 626 1931  
1990 THIRD STREET SUITE 500  
SACRAMENTO, CA 95811  
TEL 916 443 5811 FAX 916 443 2985

PROJECT  
**LOCKER ROOM REMODEL**  
**NORTH TAHOE**  
2945 POLARIS ROAD  
TAHOE CITY, CA 96145

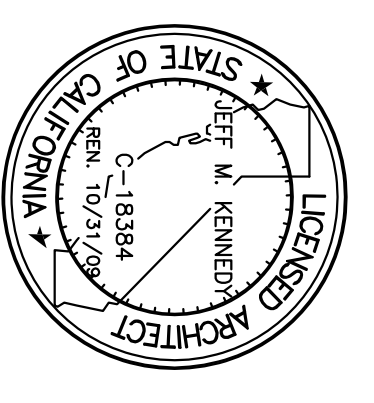
ADDENDUM  
**1**  
DSA APPLICATION  
**02-110279**  
REFERENCE SHEET  
**A18.1**

ITEM  
**A7**  
JOB  
**01-087**  
SHEET  
**AD1-A7a**

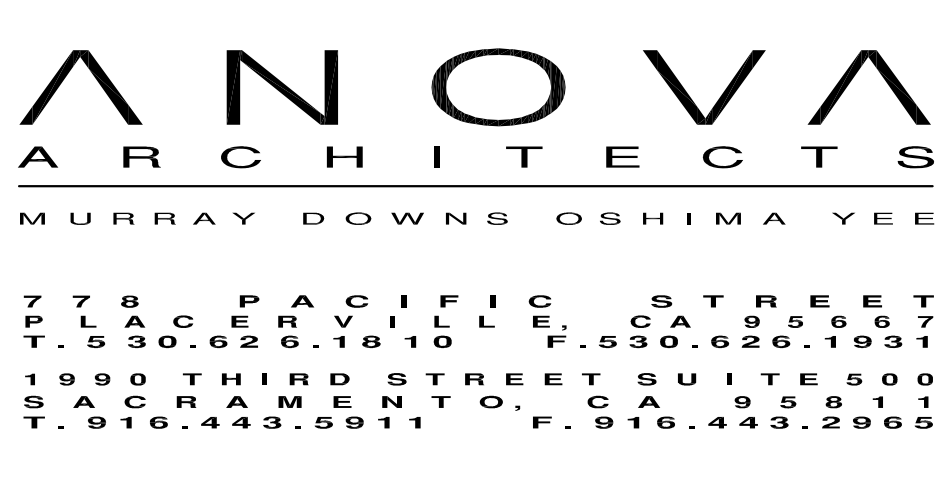




**TAHOE TRUCKEE  
UNIFIED SCHOOL  
DISTRICT**  
11839 DONNER PASS ROAD  
TRUCKEE, CA 96161  
(530) 562-2500



ARCHITECT  
CONSULTANT



**LOCKER ROOM REMODEL @  
NORTH TAHOE MIDDLE SCHOOL &  
NORTH TAHOE HIGH SCHOOL**  
2945 POLARIS ROAD  
TAHOE CITY, CA. 96145

DESIGNER/OWNER  
DIV. OF THE STATE AGENCIES  
68944-15  
02-110219  
3144  
DATE: AC R13 SS  
REVISONS: 03.26.2009

NO.	REVISIONS	DATE
1	APPENDIX #1	03.26.2009

SHEET TITLE  
**FIRST FLOOR  
ENLARGED  
DEMOLITION CEILING  
PLANS**

DATE: 02.19.2009  
DRAWN BY: ANOVA JOB NO. 01-1897.1  
SHEET #  
**AD1-  
A5.1.0**

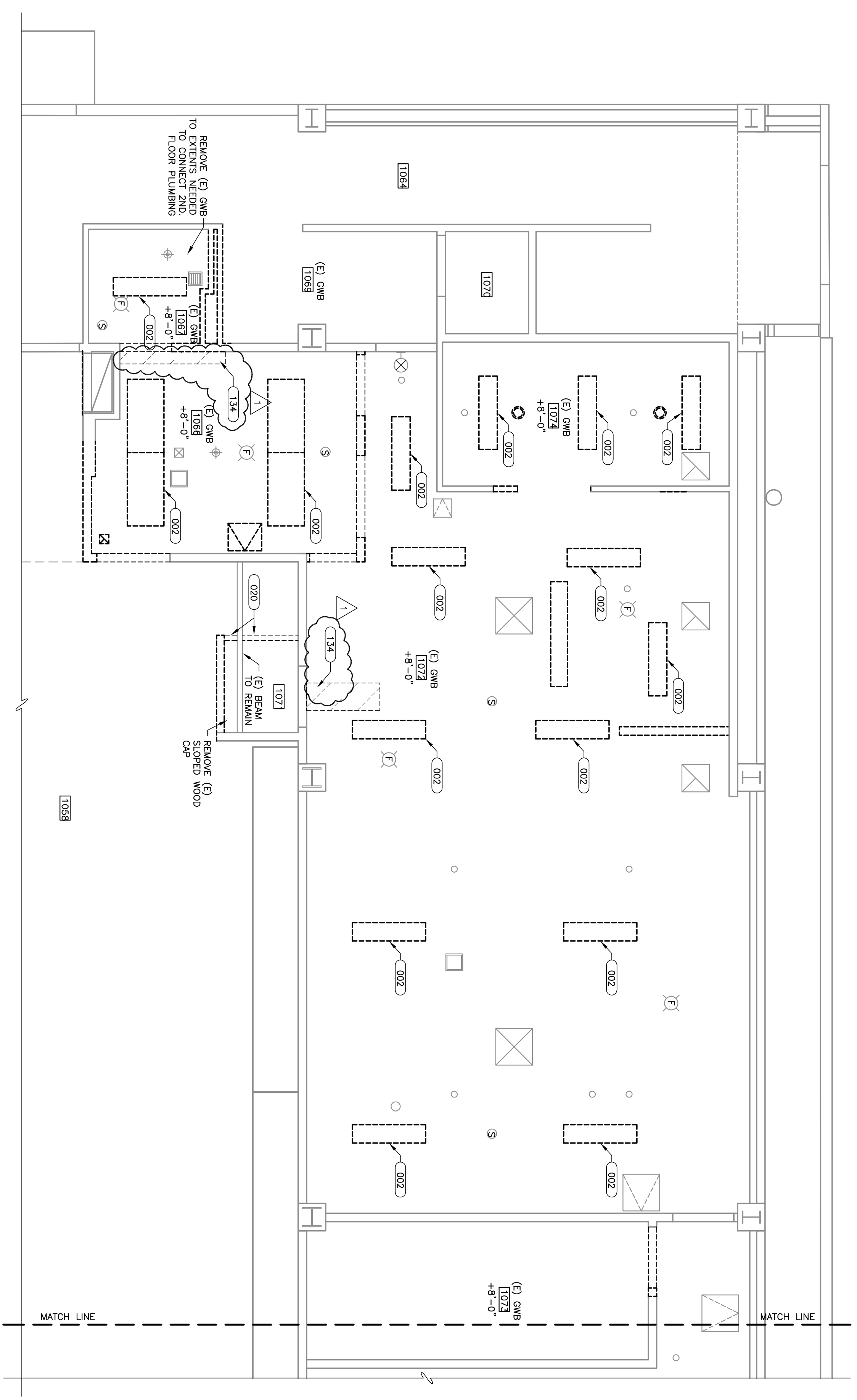
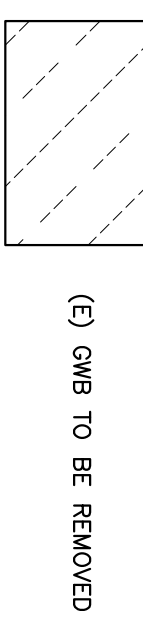
**KEYNOTES**

- 002 DIVISION 2 - DEMOLITION
- REMOVE EXISTING LIGHT FIXTURE(S), CORONA W/
- REMOVE EXISTING LIGHT FIXTURE(S), CORONA W/
- REMOVE EXISTING CEILING FRAMING AND GYP BOARDING W/
- REMOVE EXISTING CEILING FRAMING AND GYP BOARDING W/
- REMOVE EXISTING CEILING FRAMING AND GYP BOARDING W/
- REMOVE GYP FROM CEILING TO EXIST SHOW

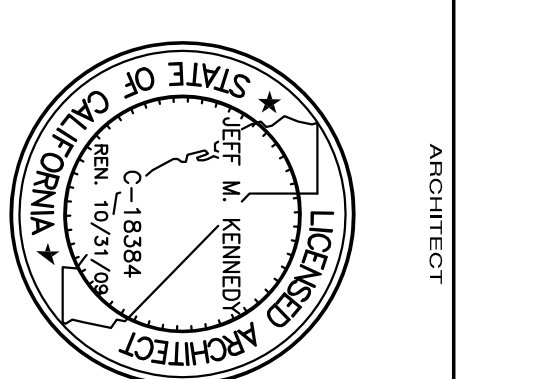
**SHEET NOTES:**

1. REMOVE (E) OMB AS NECESSARY TO PROVIDE ACCESS TO (N) WORK LOCATED ON THE 2ND FLOOR
2. REMOVE GYP. BO. FOR INSTALLATION OF NEW BACKING WHERE EXISTING MATERIAL
- INSTALL NEW 5/8" TYPE X OMB FLASH W/

**LEGEND:**



**TAHOE TRUCKEE  
UNIFIED SCHOOL  
DISTRICT**  
11839 DONNER PASS ROAD  
TRUCKEE, CA 96161  
(530) 562-2500



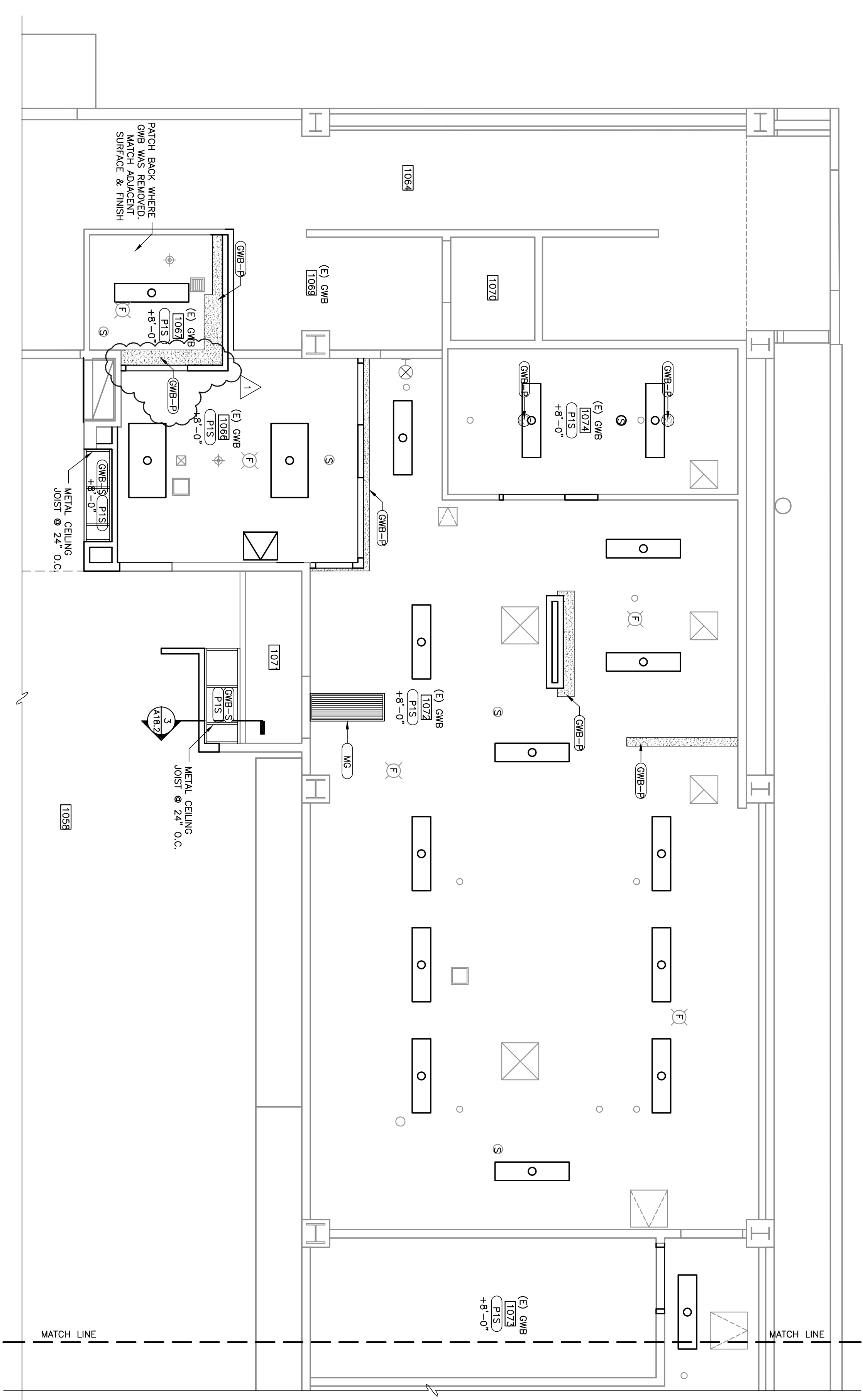
ARCHITECT  
CONSULTANT

**KEYNOTES**

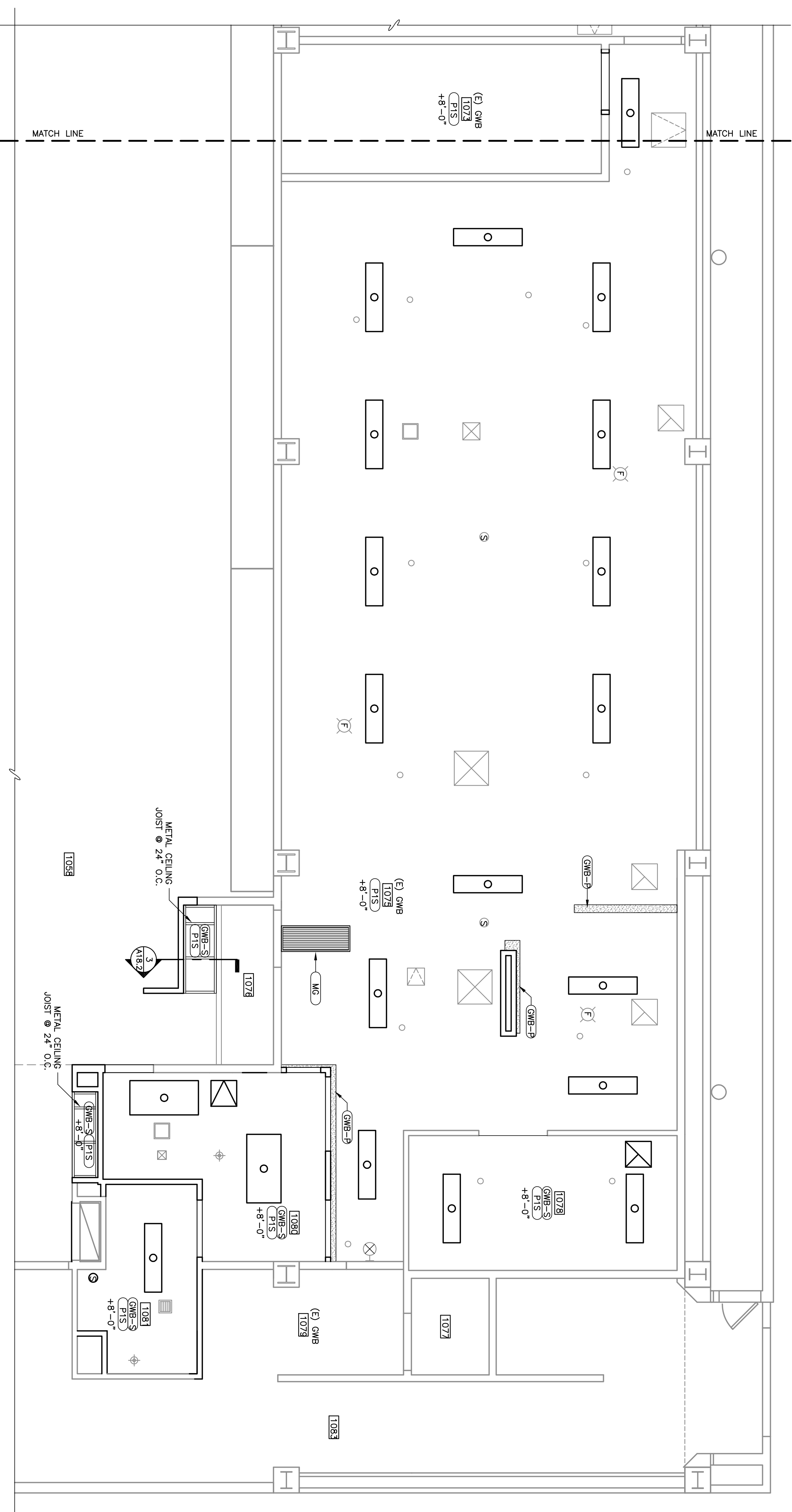
**DIVISION 9 - FINISHES**  
GMB-3 3/8" GYPSUM WALL BOARD, SMOOTH  
GMB-5 5/8" GYPSUM WALL BOARD, SMOOTH  
PFS PAINT, COLOR 1, SATIN ADVANTAGE FINISH  
**DIVISION 15 - MECHANICAL**  
MS INSTALL NEW MECHANICAL GRILLE & PAINT

CEILING LEGEND	
	1x4 FLUORESCENT LIGHT FIXT. (SURFACE MOUNTED)
	2x4 FLUORESCENT LIGHT FIXT. (SURFACE MOUNTED)
	RETURN AIR GRILLE
	SUPPLY AIR REGISTER
	EXHAUST FAN GRILLE
	SMOKE DETECTOR
	FIRE ALARM STROBE
	EXIT SIGN
	(E) RECESSED FIRE SPRINKLER HEAD

**SHEET NOTES:**  
1. PREPARE (E) SURFACES AS REQUIRED TO RECEIVE NEW FINISHES  
2. MATCH ADJACENT SURFACE AND FINISH, TYP.



**1 ENLARGED FIRST FLOOR CEILING PLAN NORTH TAHOE MIDDLE SCHOOL**  
AS.1.1 SCALE: 1/4" = 1'-0"



**1 ENLARGED FIRST FLOOR CEILING PLAN NORTH TAHOE HIGH SCHOOL**  
AS.1.1 SCALE: 1/4" = 1'-0"

**LOCKER ROOM REMODEL @  
NORTH TAHOE MIDDLE SCHOOL &  
NORTH TAHOE HIGH SCHOOL**  
2945 POLARIS ROAD  
TAHOE CITY, CA. 96145



DESIGNATION SHEET  
DIV. OF THE STATE ARCHITECTURE  
PROJECT NO. 02-110219  
DATE 02-11-2009  
3:14:44  
AC F13 SS

REVISIONS  
APPENDIX #1 03.26.2009

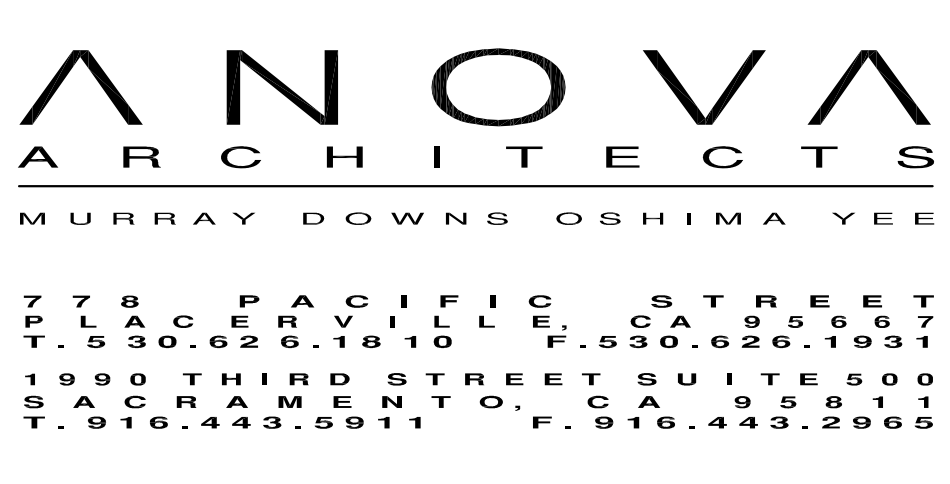
SHEET TITLE  
**FIRST FLOOR  
ENLARGED CEILING  
PLANS**

DATE 02.19.2009  
DRAWN BY ANOVA  
CHECKED BY ANOVA  
DATE 01-28-07  
SHEET  
**AD1-  
AS.1.1**

**TAHOE TRUCKEE  
UNIFIED SCHOOL  
DISTRICT**  
11839 DONNER PASS ROAD  
TRUCKEE, CA 96161  
(530) 562-2500



CONSULTANT



**LOCKER ROOM REMODEL @  
NORTH TAHOE MIDDLE SCHOOL &  
NORTH TAHOE HIGH SCHOOL**  
2945 POLARIS ROAD  
TAHOE CITY, CA. 96145

REGISTRATION STATE  
DIV. OF THE STATE ARCHITECTURE  
68944-15  
02-11/2/19  
3-14-14  
DATE: F13 SS  
APPENDIX #1 03.26.2009

SHEET TITLE  
**SECOND FLOOR  
ENLARGED  
DEMOLITION/CEILING  
PLANS**

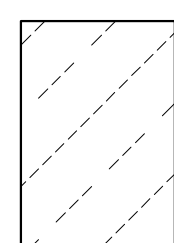
**AD1-  
A5.2.0**

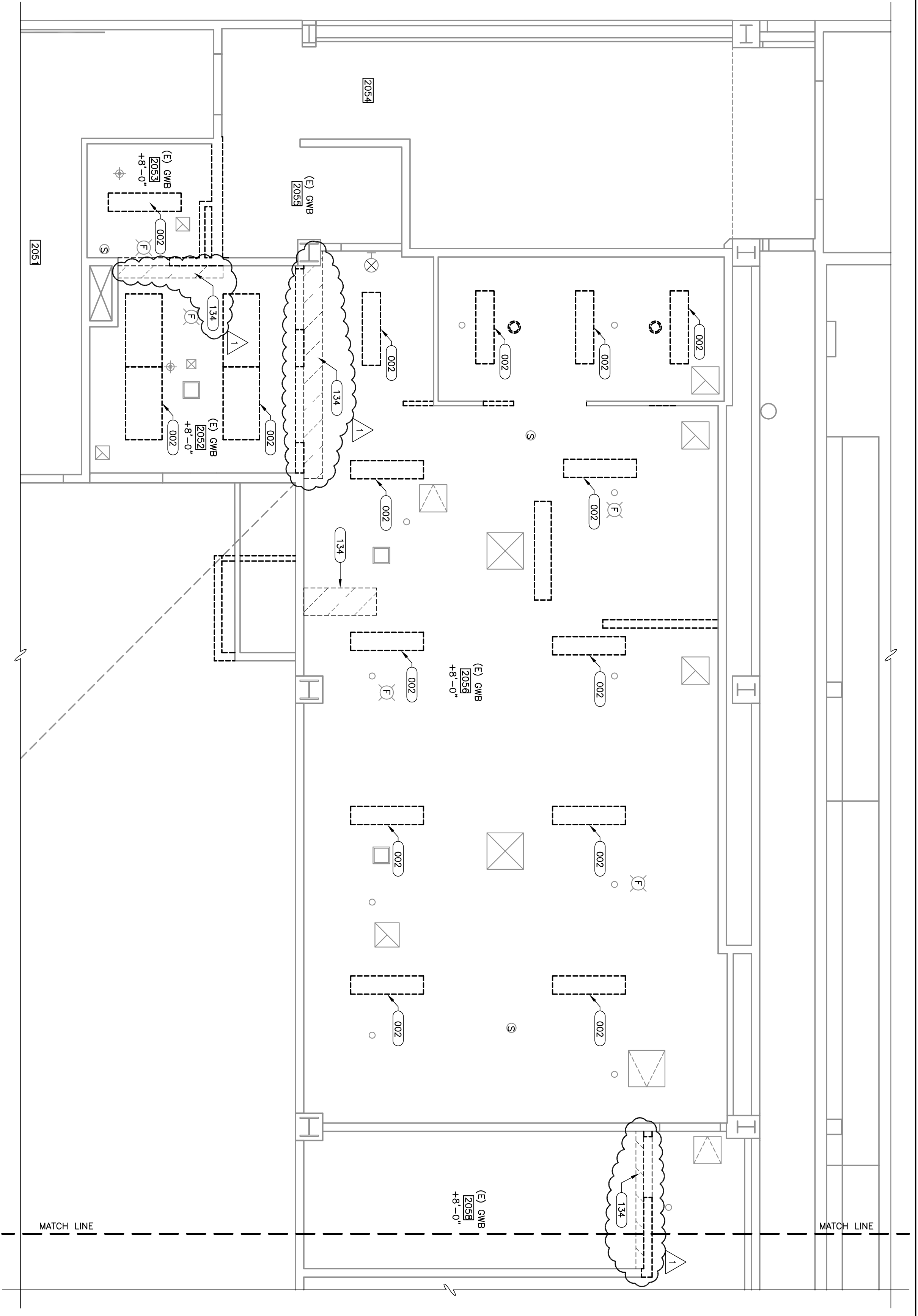
**KEYNOTES**

002	REMOVE EXISTING LIGHT FIXTURE(S), COORDINATE W/ 11839 DONNER PASS ROAD TRUCKEE, CA 96161
127	REMOVE EXISTING LIGHT FIXTURE(S), COORDINATE W/ 11839 DONNER PASS ROAD TRUCKEE, CA 96161
134	REMOVE (E) FINE ALARM STROBE DEVICE COORDINATE W/ 11839 DONNER PASS ROAD TRUCKEE, CA 96161
135	REMOVE (E) EXIT SIGN COORDINATE W/ ELECTRICAL DWGS.

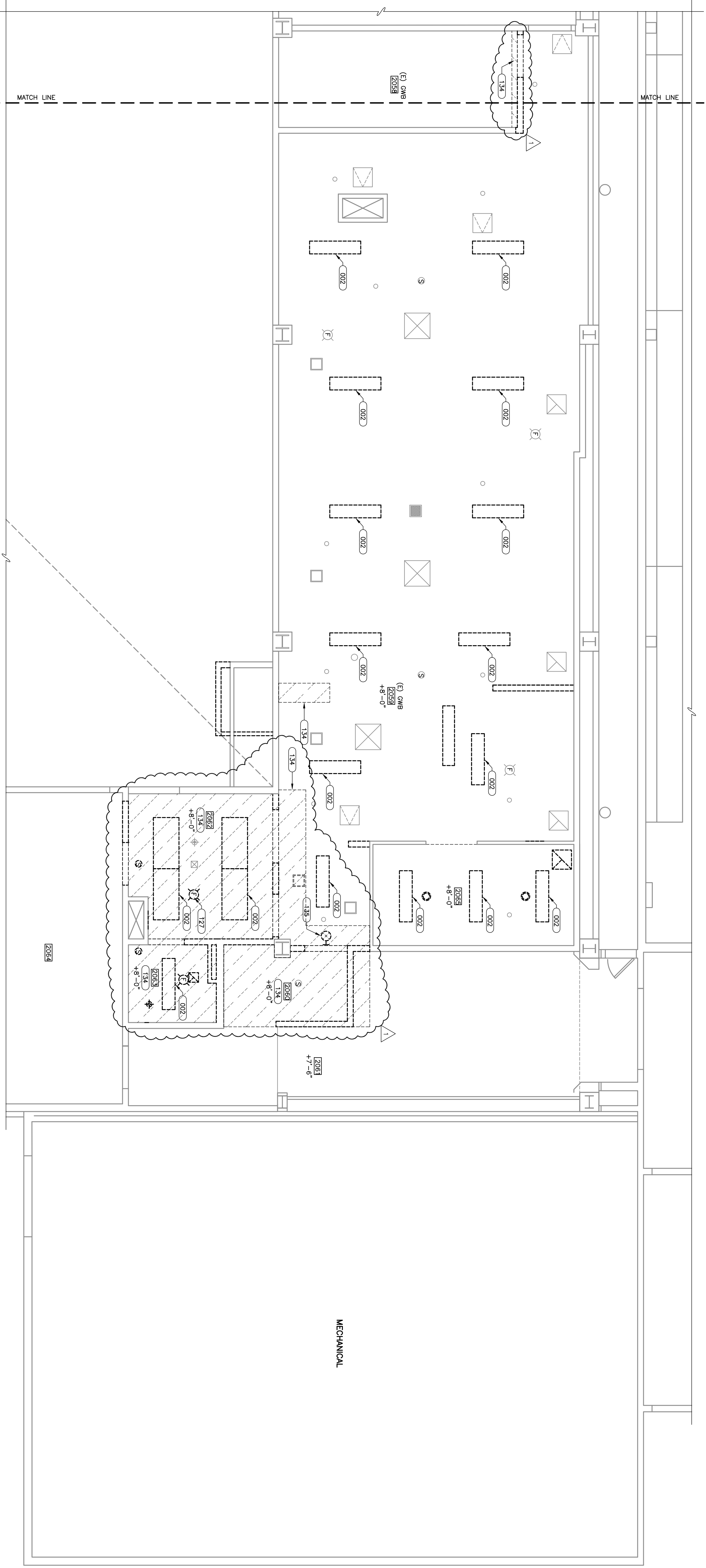
- SHEET NOTES:**
1. REMOVE (E) GMB AS NECESSARY TO PROVIDE ACCESS TO (N) WORK LOCATED ON THE 2ND FLOOR
  2. REMOVE GFR. BD. FOR INSTALLATION OF NEW BAKING WHERE CALLED FOR AND INSTALL NEW 5/8" TYPE "X" GMB FLUSH W/ EXISTING MANDREL

**LEGEND:**

 (E) GMB TO BE REMOVED

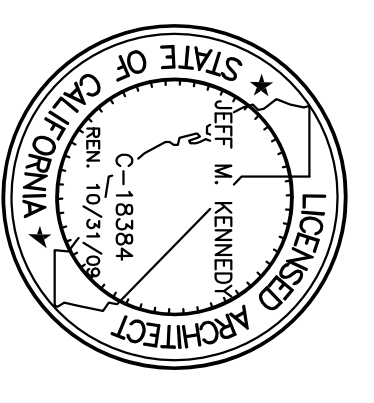


**1 ENLARGED DEMOLITION SECOND FLOOR CEILING PLAN NORTH TAHOE MIDDLE SCHOOL**  
SCALE: 1/4" = 1'-0"

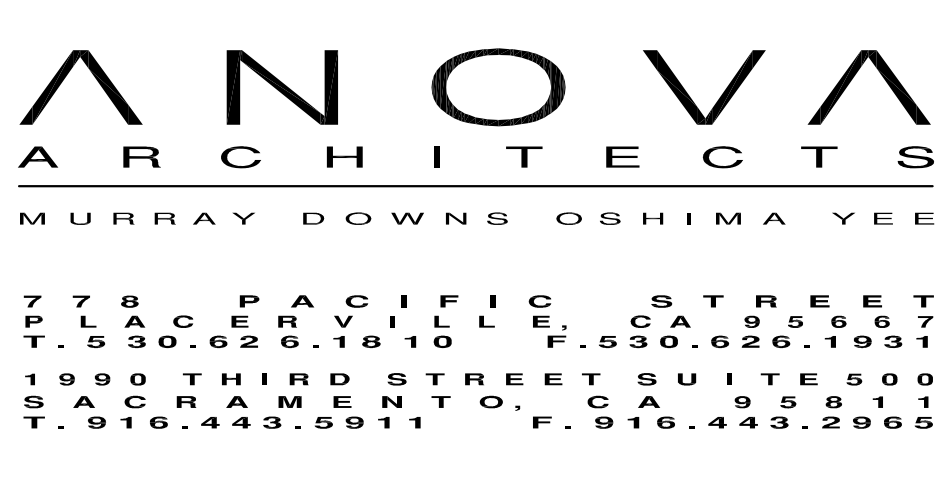


**1 ENLARGED DEMOLITION SECOND FLOOR CEILING PLAN NORTH TAHOE HIGH SCHOOL**  
SCALE: 1/4" = 1'-0"

**TAHOE TRUCKEE  
UNIFIED SCHOOL  
DISTRICT**  
11839 DONNER PASS ROAD  
TRUCKEE, CA 96161  
(530) 562-2500



ARCHITECT  
CONSULTANT



**LOCKER ROOM REMODEL @  
NORTH TAHOE MIDDLE SCHOOL &  
NORTH TAHOE HIGH SCHOOL**  
2945 POLARIS ROAD  
TAHOE CITY, CA. 96145

DEPARTMENTAL STAMP  
DIV. OF THE STATE ARCHITECTURE  
68344-15  
02-11/079  
3144  
DATE: \_\_\_\_\_  
DRAWN BY: \_\_\_\_\_  
CHECKED BY: \_\_\_\_\_

REVISIONS

NO.	DESCRIPTION	DATE

SHEET TITLE  
**SECOND FLOOR  
ENLARGED CEILING  
PLANS**

DATE: 02.19.2009  
DRAWN BY: ANNOVA JOB NO. 01-087.1  
SHEET: \_\_\_\_\_

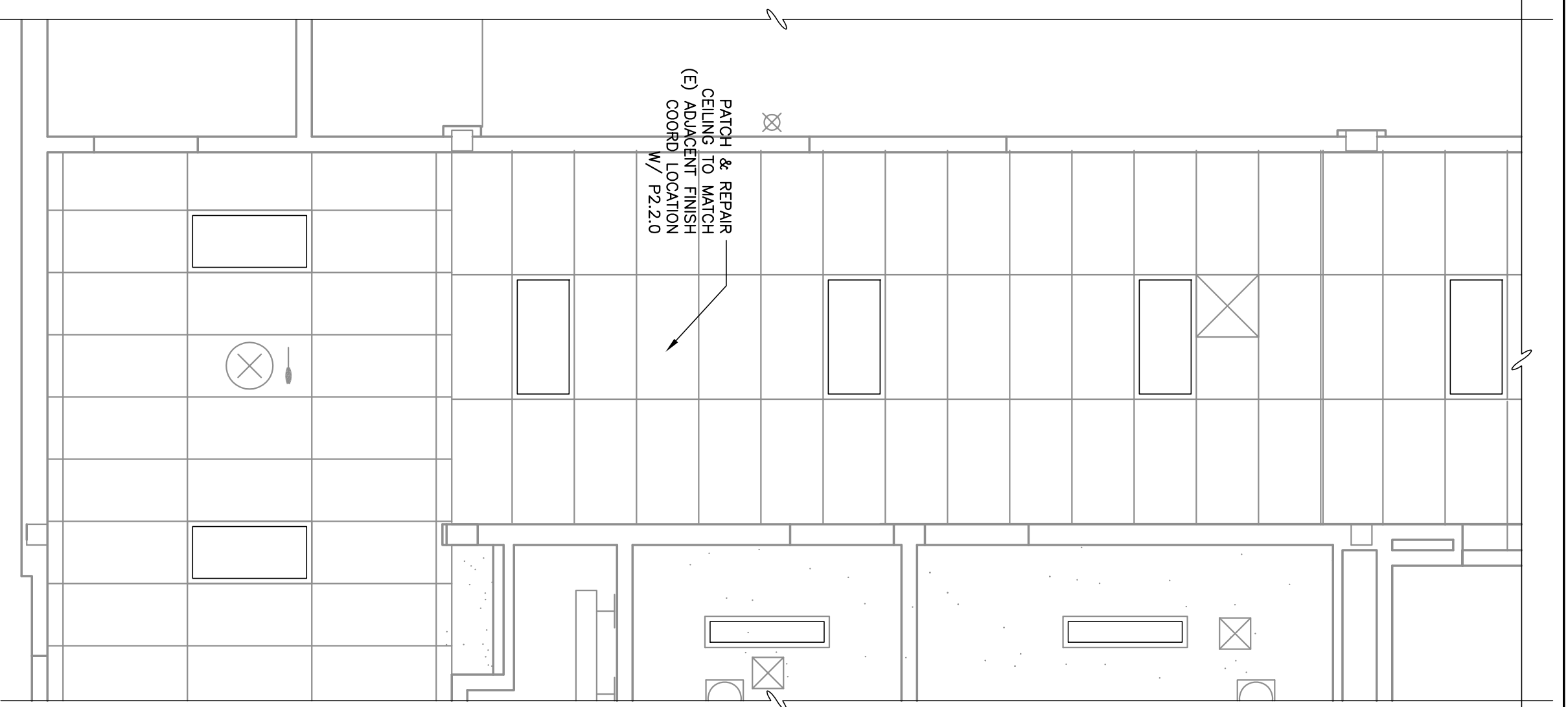
**AD1-  
A5.2.1**

- KEYNOTES**
- DIVISION 9 - FINISHES**  
2/8" GYP-SUM WALL BOARD, SMOOTH  
FINISH  
PAINT: COLOR 1, "SUN"
  - DIVISION 15 - MECHANICAL**  
INSTALL NEW MECHANICAL GRILLE & PAINT

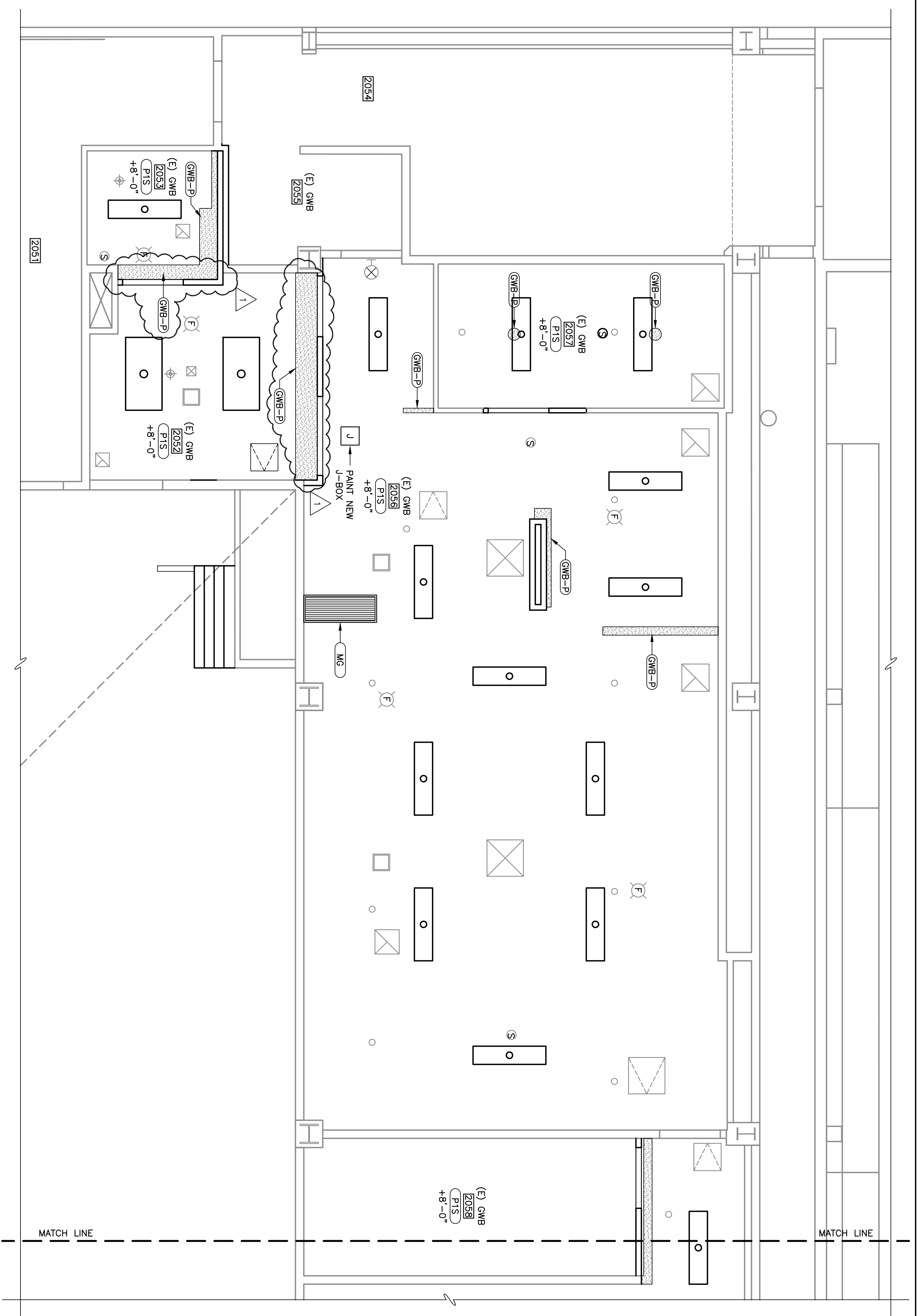
**CEILING LEGEND**

	1x4 FLUORESCENT LIGHT FIXTURE (SCHEDULE NOTED)
	2x4 FLUORESCENT LIGHT FIXTURE
	(E) LIGHT FIXTURE (SCHEDULE NOTED)
	RETURN AIR GRILLE
	SUPPLY AIR REGISTER
	EXHAUST FAN GRILLE
	SMOKE DETECTOR
	FIRE ALARM STROBE
	EXIT SIGN

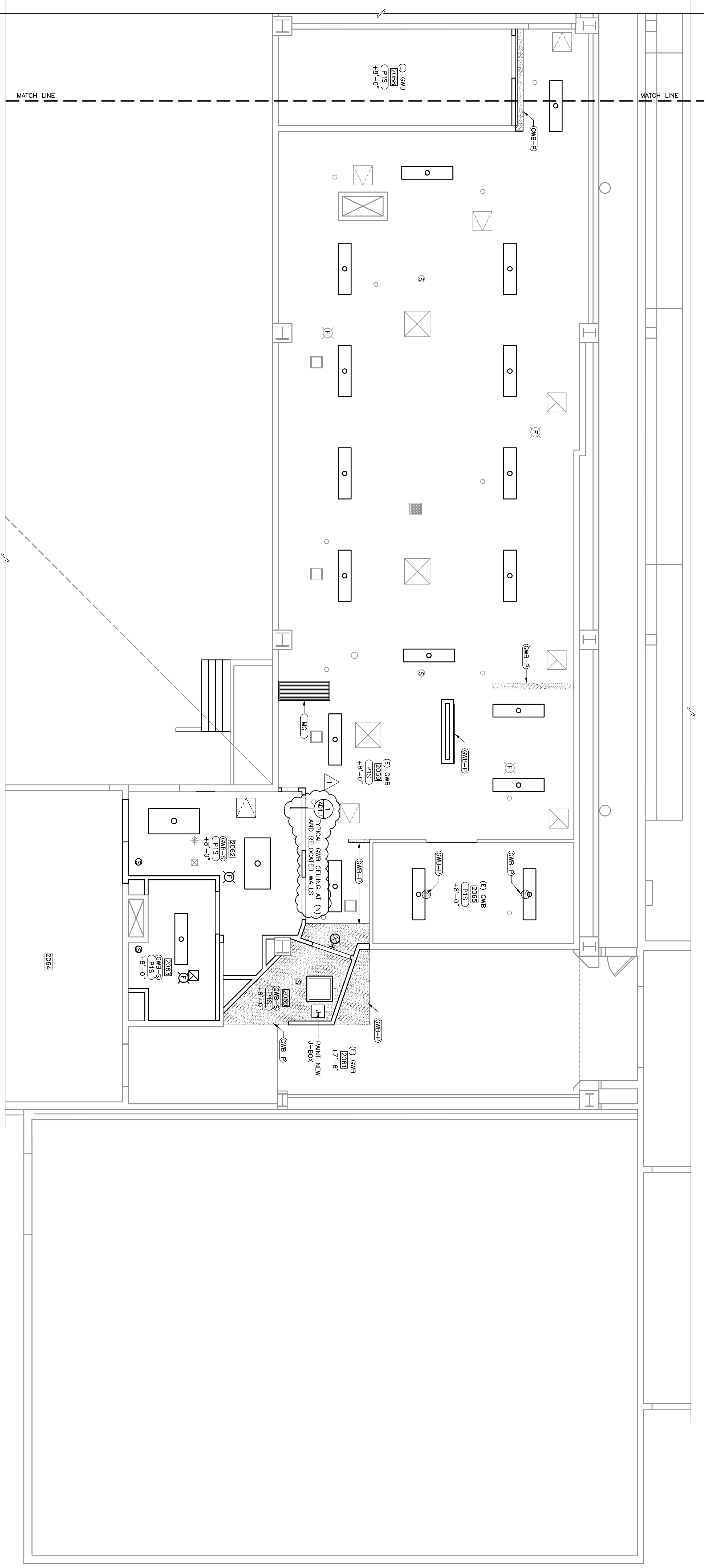
- SHEET NOTES:**
- PREPARE (E) SURFACES AS REQUIRED TO RECEIVE NEW FINISHES
  - MATCH ADJACENT SURFACE AND FINISH, TYP.



**2 ENLARGED SECOND FLOOR CEILING PLAN**  
SCALE: 1/4" = 1'-0"



**1 ENLARGED SECOND FLOOR CEILING PLAN**  
SCALE: 1/4" = 1'-0"



**1 ENLARGED SECOND FLOOR CEILING PLAN**  
SCALE: 1/4" = 1'-0"